

RAKK STORAGE STAND

FEATURES



BICYCLE & THE STAND

SET UP & PLACING BICYCLE IN THE STAND

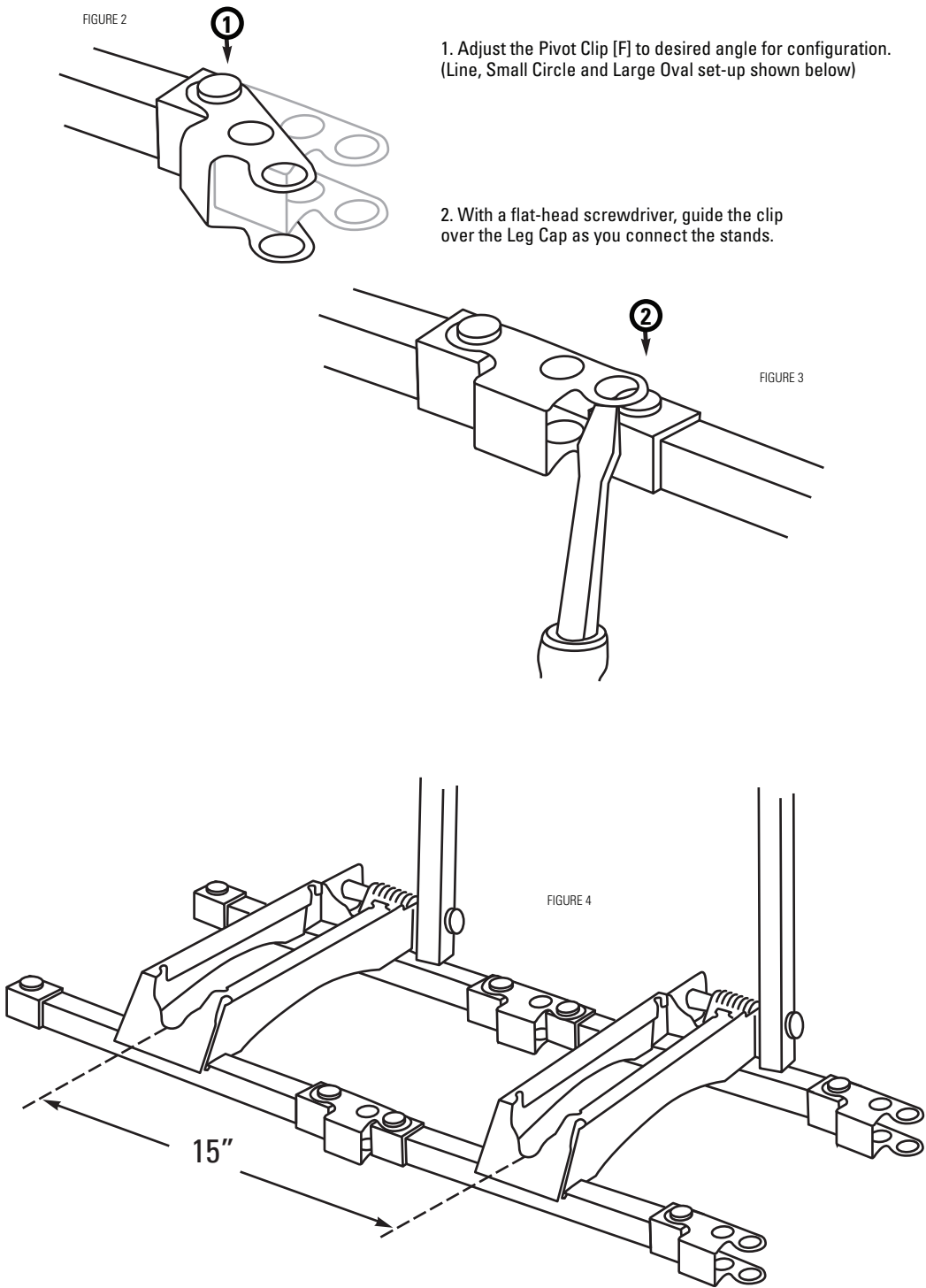


- 1. Place hand on Swing Arm and press against spring tension. Push the Lock Arm button at the back of the stand and raise the Swing Arm into position.
- 2. Roll the bike tire straight into the stand until it rests in the bottom of the Wheel Cradle.

**NOTE:** Tire must be inflated to prevent bike from falling over.

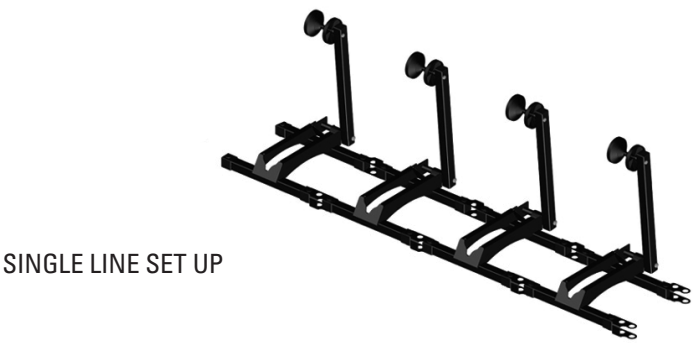
LINKING STANDS

SETTING UP MULTIPLE STANDS



**NOTE:** The different holes on the Pivot Clip allow spacing options of 12", 13.5" and 15".

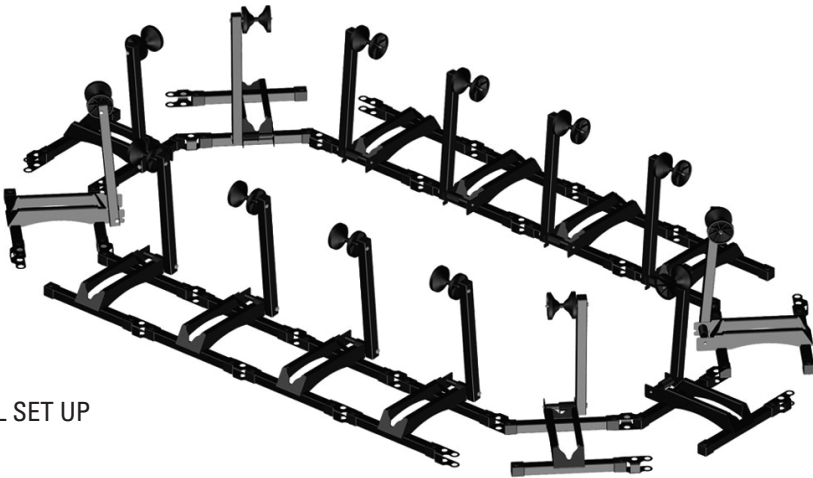
SAMPLE CONFIGURATIONS



SINGLE LINE SET UP



SMALL CIRCLE SET UP



LARGE OVAL SET UP